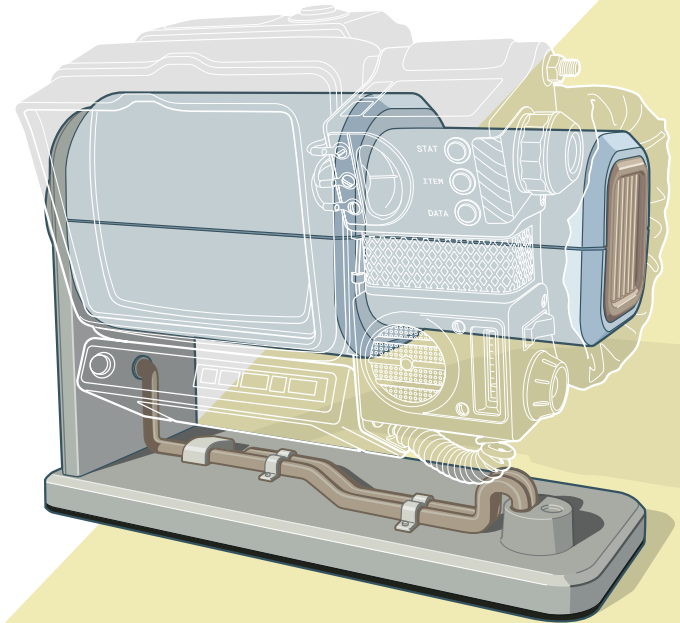




The Wand Company

Pip-Boy Stand

CONSTRUCTION MANUAL
AND OPERATING INSTRUCTIONS



RobCo

bringing a smile to your ears!

INTRODUCTION The Pip-Boy Stand Bluetooth Speaker Kit is a faithful replica of the Pip-Boy stand created by RobCo for Vault-Tec that was routinely installed as part of a vault's standard service equipment. The specially-designed stands ensured that Pip-Boys were stored in convenient locations within each vault, easily accessible to vault-dwellers that needed them.

For the vault-dweller who wants an enjoyable task to take their mind off the post-apocalyptic desolation of the Wasteland, who has an hour or so to kill and fancies a bit of audio entertainment to lighten the mood in their camp, RobCo presents this Pip-Boy Stand as a self-assembly kit, ready to be constructed, with added music-playing functionality via its advanced Bluetooth module.

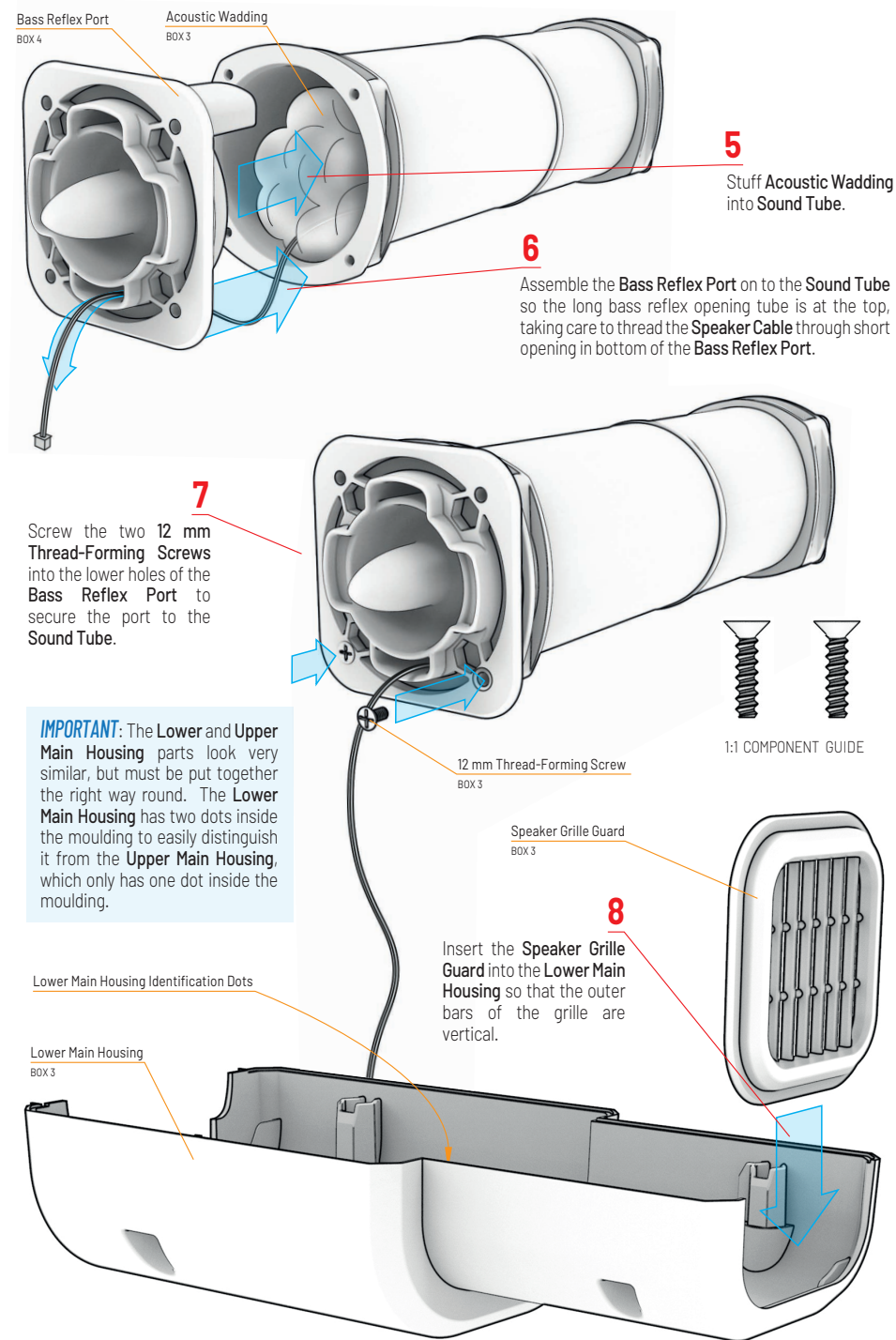
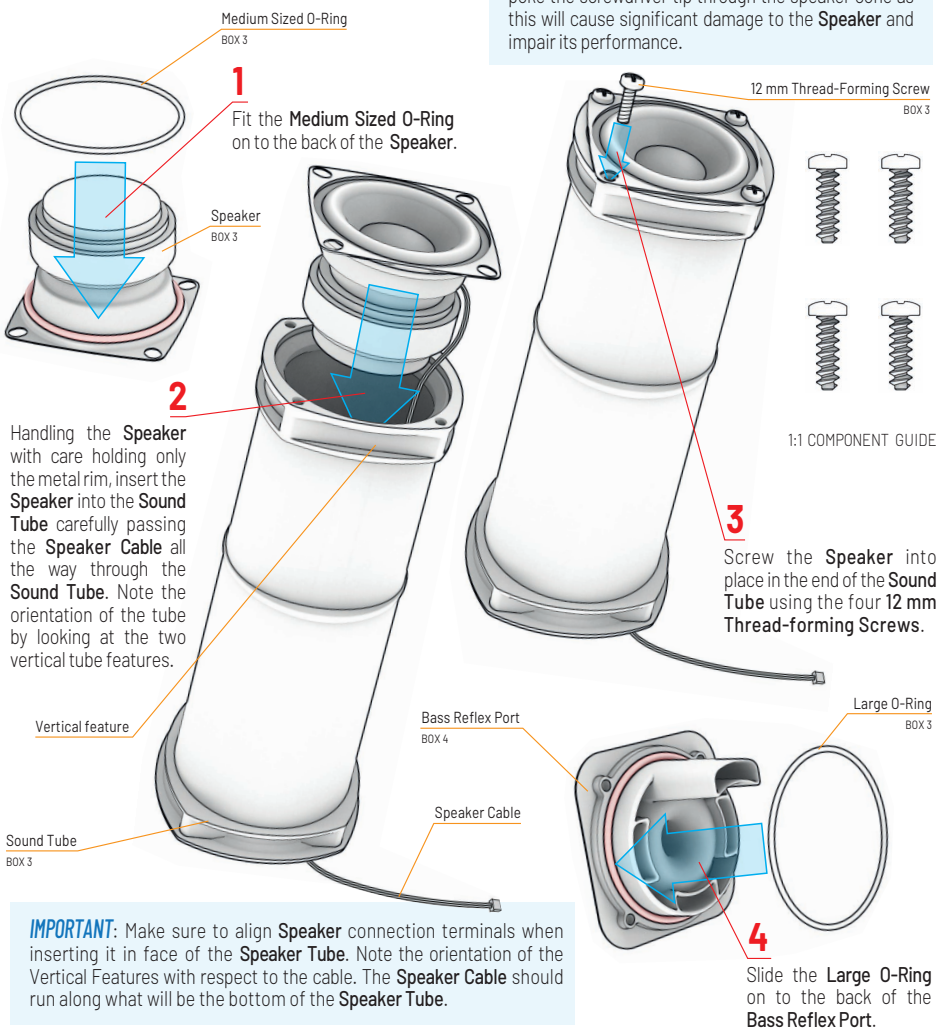
The Pip-Boy Stand replica also includes a high-quality MEMS microphone so it can also be used as a handsfree

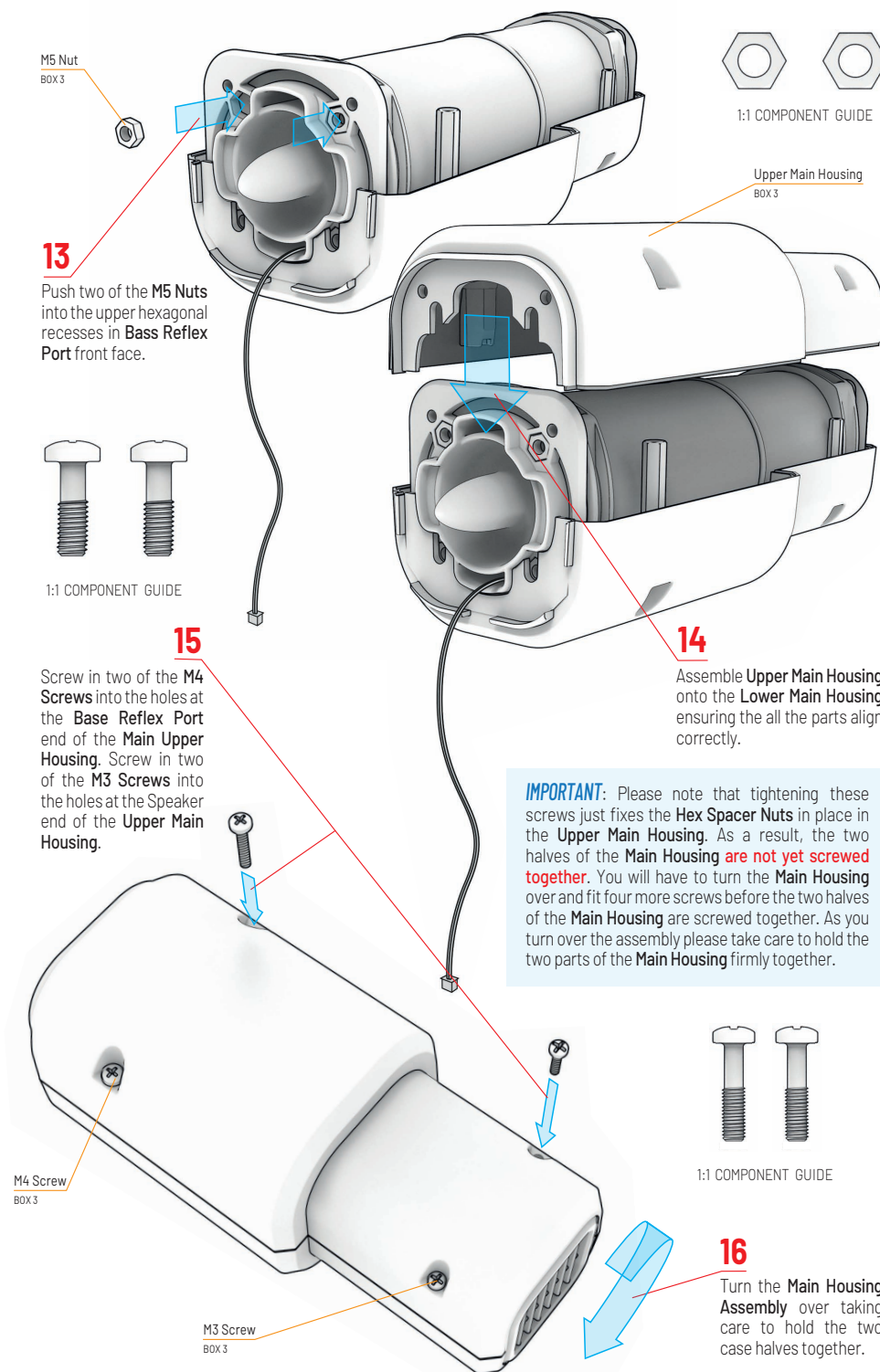
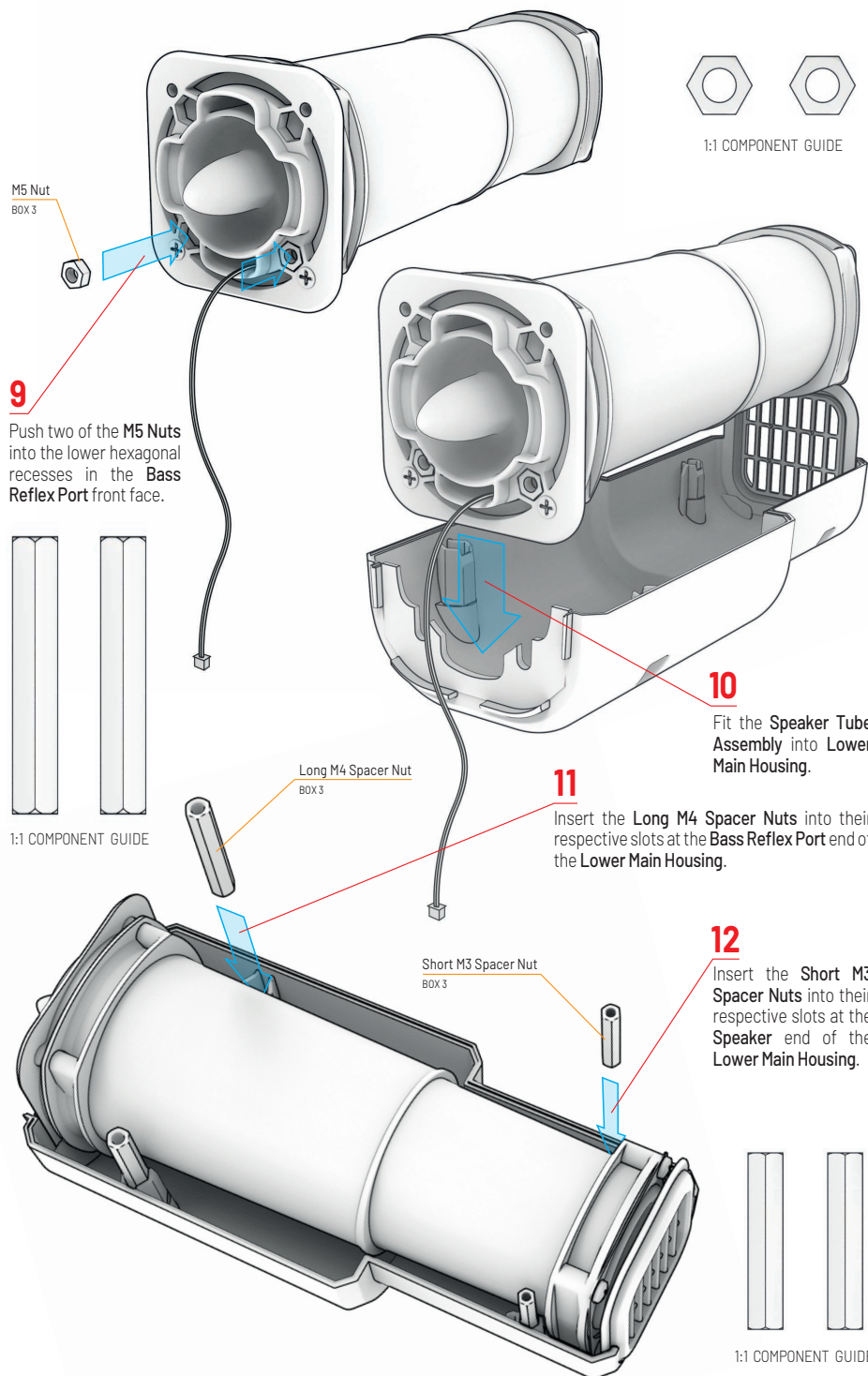
speakerphone when paired with a suitable mobile phone. Impress camp mates with your speaker building skills and discover its 10 authentic Overseer comments, each playable at the touch of a button. Finally, and of course most importantly, display your Pip-Boy 2000 Mk VI with pride in the way it was always meant to be.

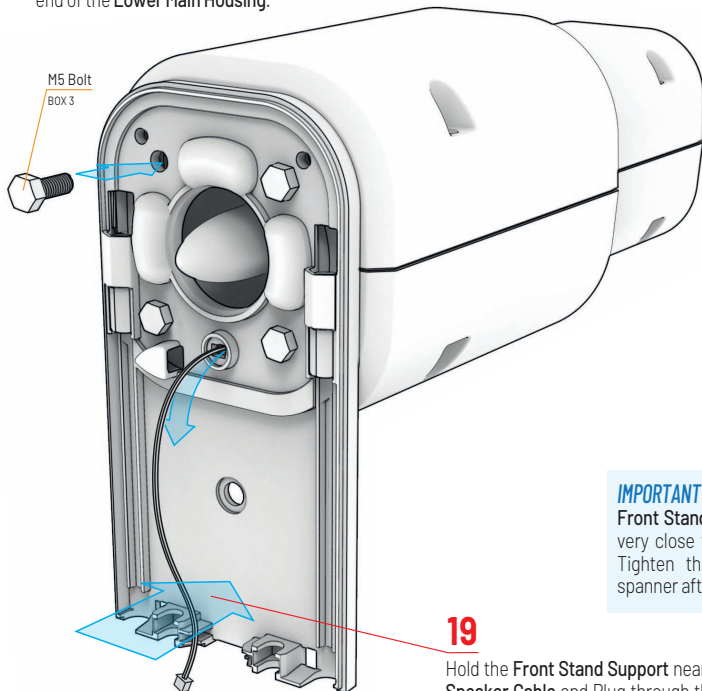
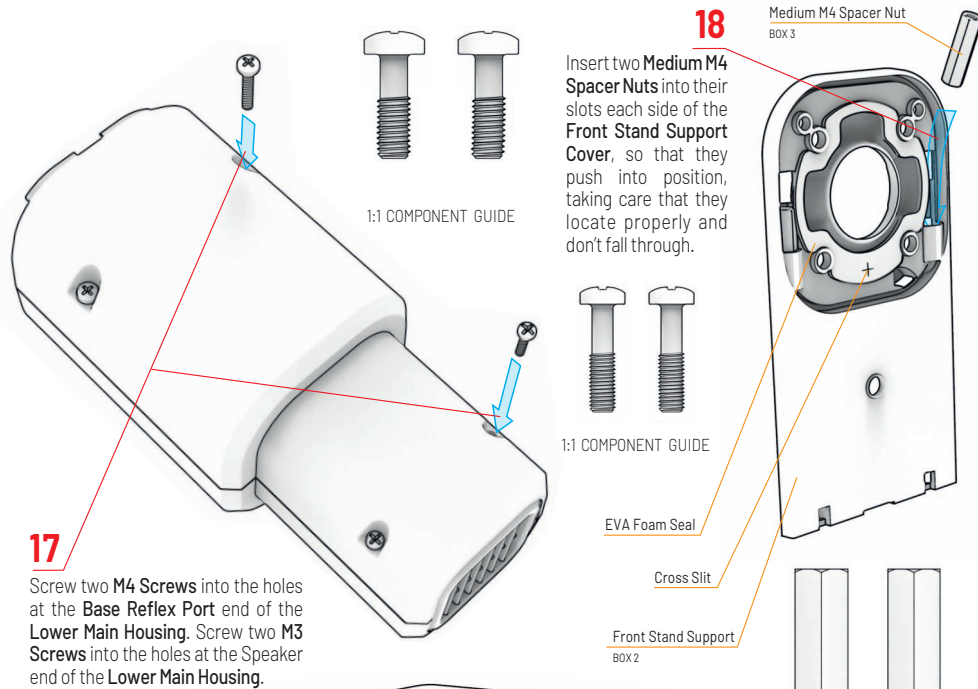
VERY IMPORTANT: Please note that the **Speaker** is very delicate and must be handled with care to avoid damaging the speaker cone. It has a strong magnet and it should not be placed on any magnetic media or on top of any credit or debit cards with a magnetic stripe. Take care not to let screws and other steel objects become attracted to the magnet. Insert the **Speaker** into the **Sound Tube** with great care and, before the protective grille is in place, take care not to poke or damage the front of the speaker cone.

IMPORTANT: when screwing the **Speaker** into position be VERY careful not to slip with the **Screwdriver** and poke the screwdriver tip through the speaker cone as this will cause significant damage to the **Speaker** and impair its performance.

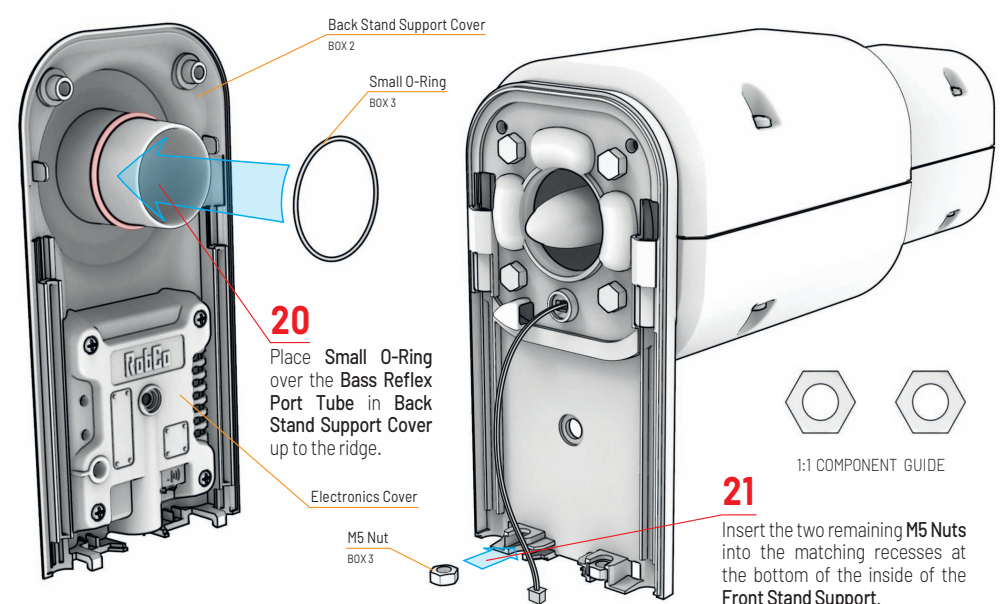
CONSTRUCTION STEPS



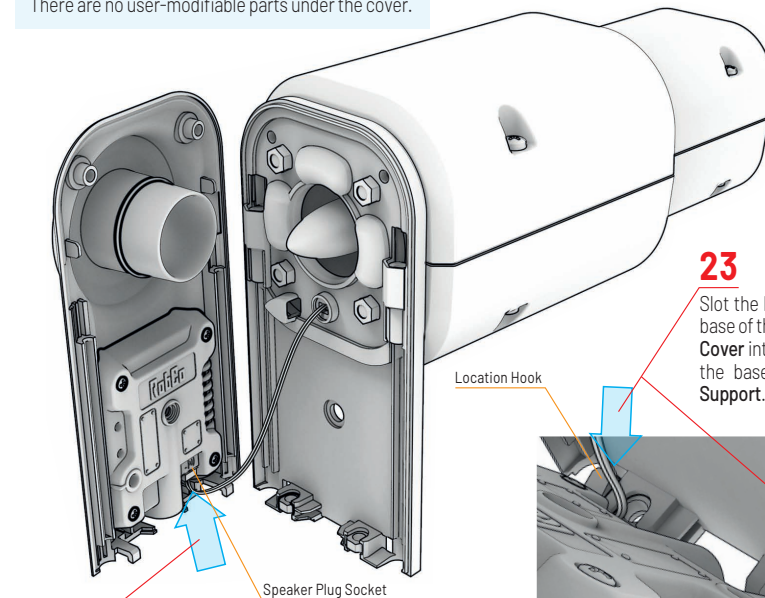




IMPORTANT: The **M5 Bolts** that secure the **Front Stand Support** to the **Main Housing** are very close to the **Bass Reflex Port** features. Tighten the bolts carefully, relocating the spanner after each quarter turn.

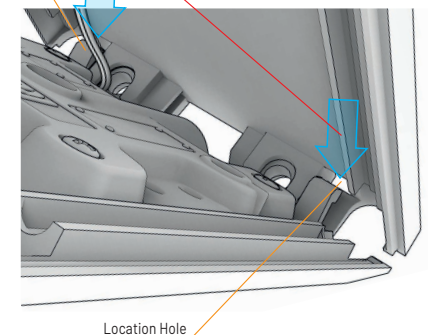


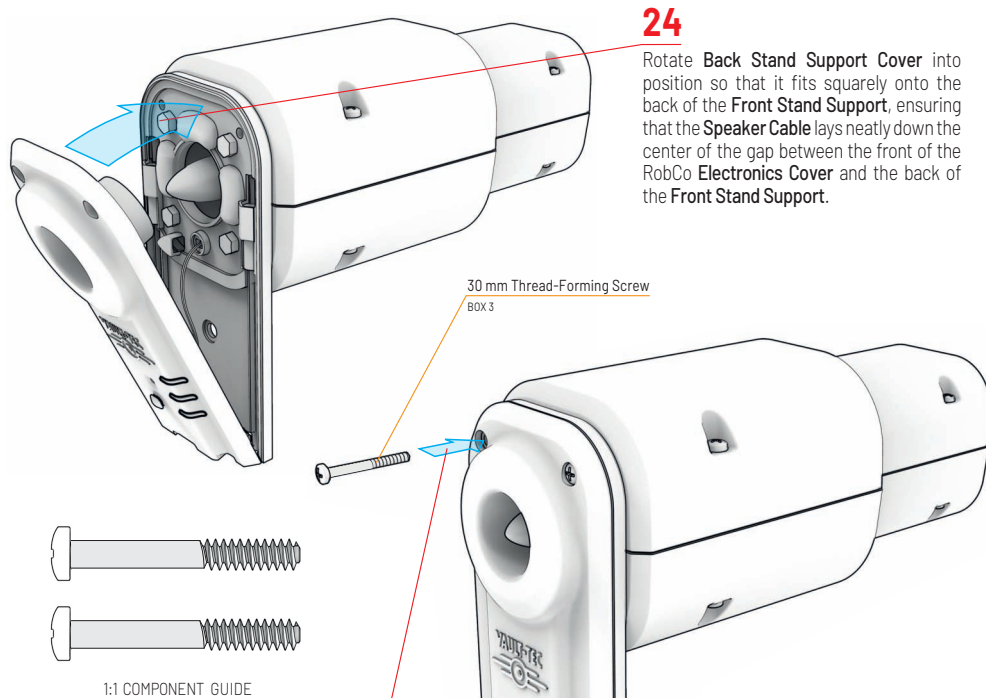
IMPORTANT: DO NOT remove the **RobCo Electronics Cover**. Bluetooth® electronics are complex and sensitive to static shock. Removing the cover will damage the electronics and void your warranty. There are no user-modifiable parts under the cover.



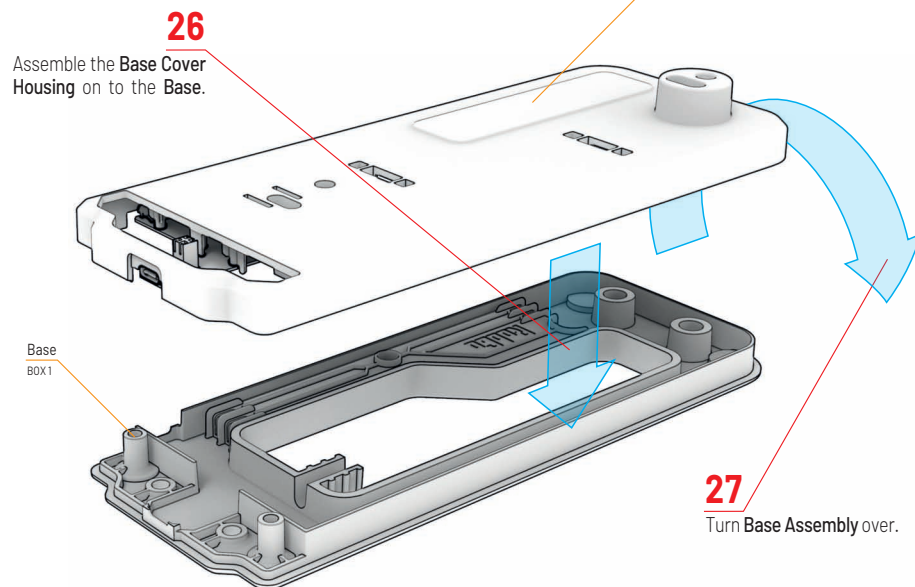
23 Slot the **Location Hooks** at the base of the **Back Stand Support Cover** into the location holes at the base of the **Front Stand Support**.

Location Hook

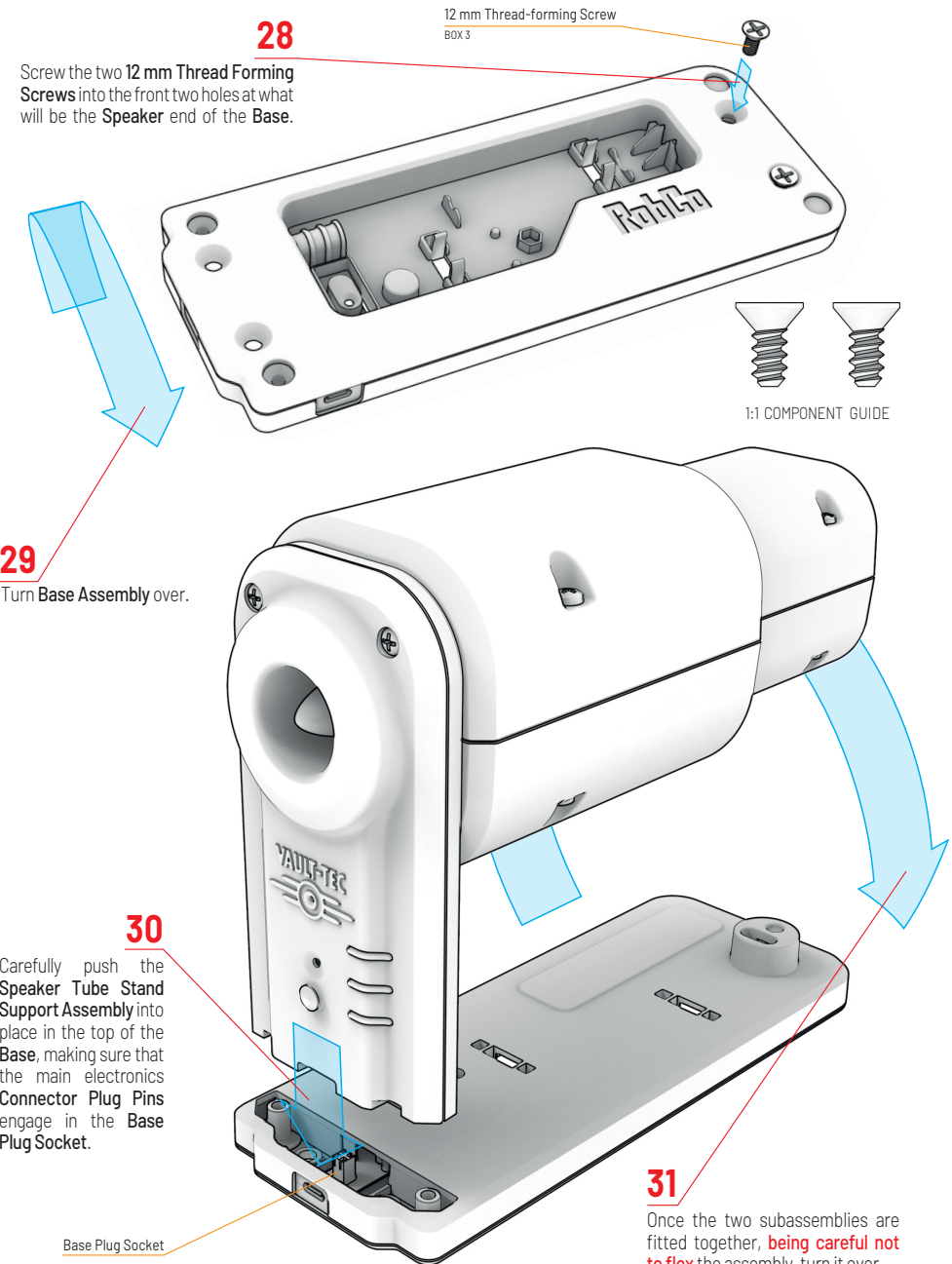




25 Screw the two 30 mm Screws into the top of the **Back Stand Support Cover** to fix the cover firmly to the **Main Housing**.



IMPORTANT: When screwing the top and bottom parts of the **Base** together, two different types of screw are used. There are two **M5 Machine Screws** and two **12 mm Thread-forming Screws**. They appear to be very similar, but look carefully at the screws and note the difference. The **M5 Machine Screws** have a smaller pitched thread and the screw shank is slightly thicker; please note that these are for use at **Support Stand** end of the **Base**. The **12 mm Thread-forming Screws** have a more angled thread and a more open pitch; these screws are for use at the **Speaker** end of the **Base**.



32

Screw the two **M5 Machine Screws** into the captive nuts at the **Support Stand** end of the **Base** underside.

M5 Machine Screw
BOX 3



1:1 COMPONENT
GUIDE

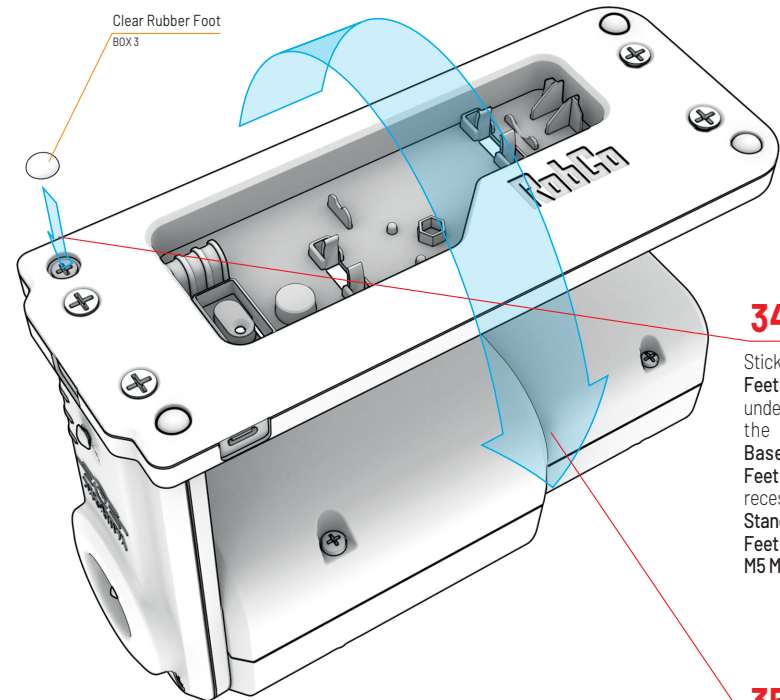
100 mm M4 Screw
BOX 3

33

Screw two **100 mm M4 Screws** through the **Base** into the **Support Stand** and tighten to secure the **Base** to the **Main Assembly**. **Note:** be careful not to overtighten the **100 mm M4 Screws**, as this will not make the **Stand** stronger and may distort the **Support Stand** assembly.

1:1 COMPONENT
GUIDE

Clear Rubber Foot
BOX 3



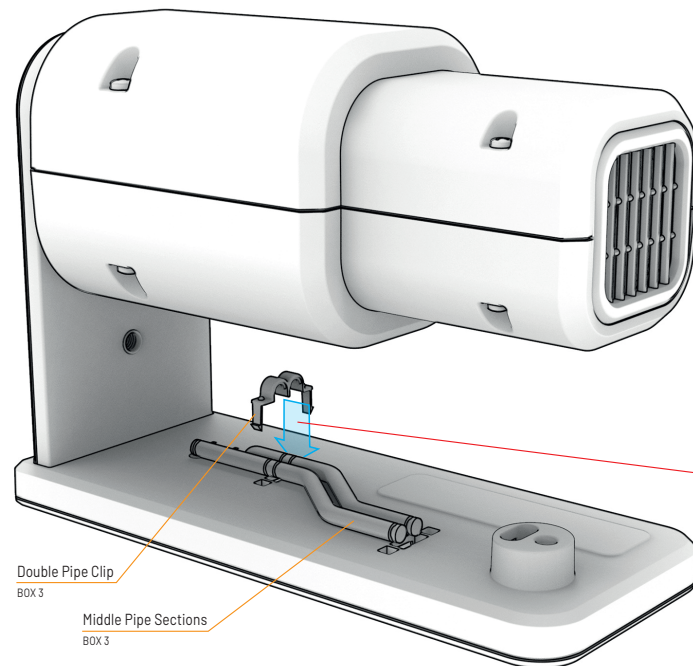
1:1 COMPONENT
GUIDE

34

Stick the four **Clear Rubber Feet** into position on the underside of the **Base**. At the **Speaker** end of the **Base**, the **Clear Rubber Feet** fit into the two blind recesses. At the **Support Stand** end the **Clear Rubber Feet** fit over the recessed **M5 Machine Screw** heads.

35

Turn the **Assembly** over

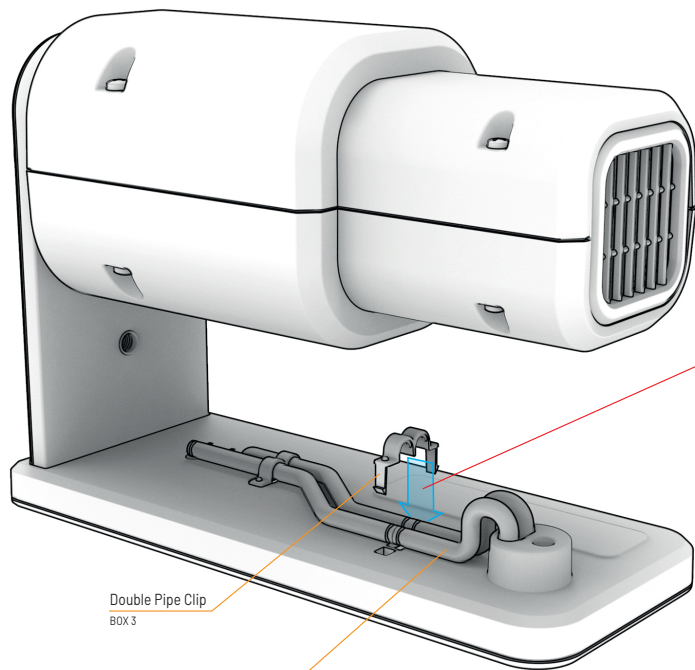


Double Pipe Clip
BOX 3

Middle Pipe Sections
BOX 3

36

Place the two **Middle Pipe Sections** into position on top of the **Base** and clip into place with one of the **Double Pipe Clips**.

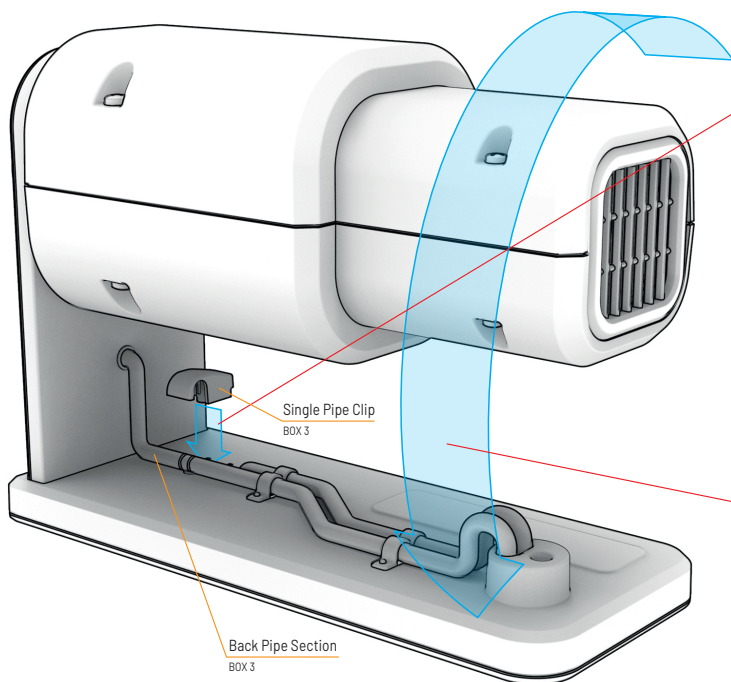


37

Place the two **Front Pipe Sections** into position on top of the **Base** and clip into place with the other **Double Pipe Clip**.

Double Pipe Clip
BOX 3

Front Pipe Sections
BOX 3



38

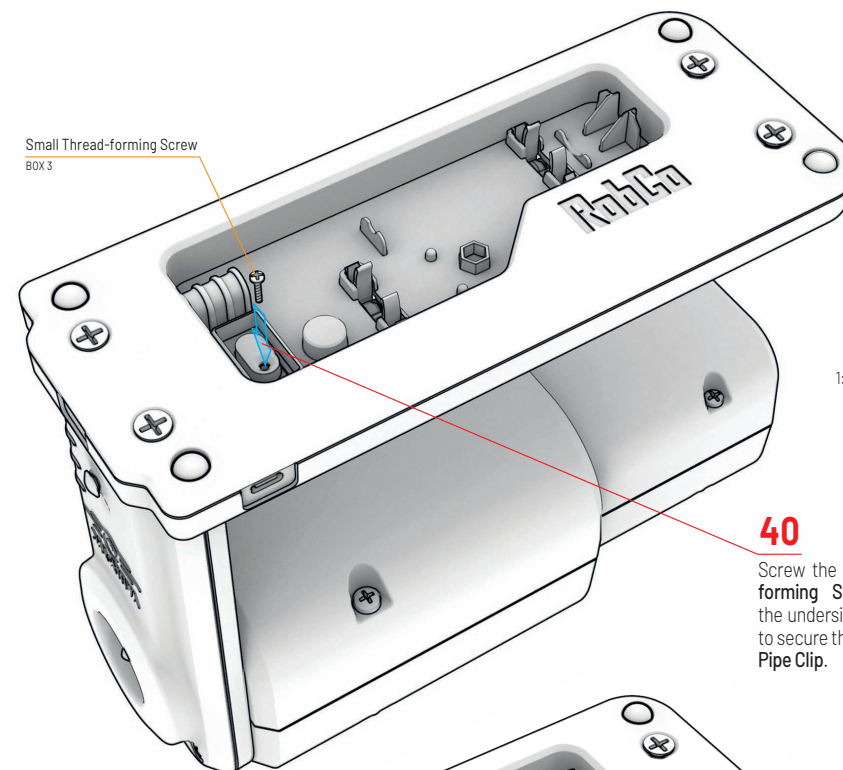
Position the **Back Pipe Section** so that the short end is inserted into the matching hole in the **Front Support Stand** and the long end aligns with the correct one of the **Middle Pipe Sections** so that the pipe appears to run in a straight line and clip into place with the **Single Pipe Clip**.

Single Pipe Clip
BOX 3

Back Pipe Section
BOX 3

39

Turn the **Assembly** over.

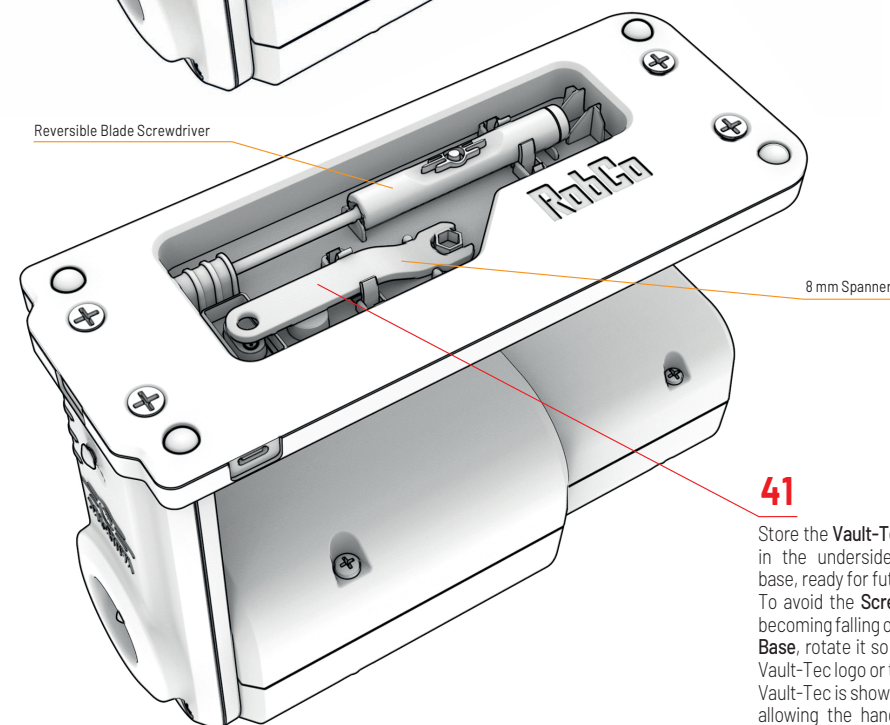


Small Thread-forming Screw
BOX 3

1:1 COMPONENT
GUIDE

40

Screw the **Small Thread-forming Screw** through the underside of the **Base** to secure the **Large Single Pipe Clip**.

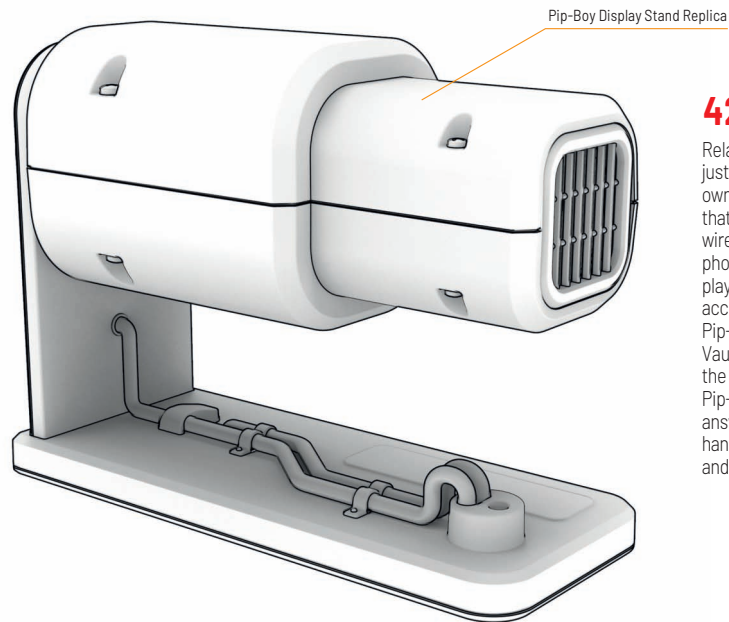


Reversible Blade Screwdriver

8 mm Spanner

41

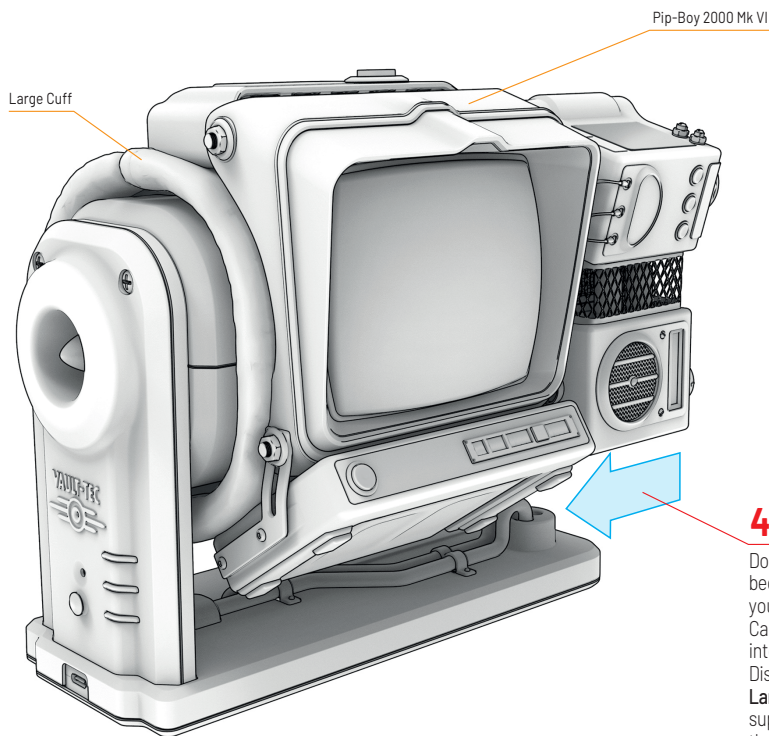
Store the **Vault-Tec Tools** in the underside of the base, ready for future use. To avoid the **Screwdriver** becoming falling out of the **Base**, rotate it so that the **Vault-Tec logo** or the word **Vault-Tec** is showing, thus allowing the handle clips to grip the screwdriver securely.



Pip-Boy Display Stand Replica

42

Relax, because you have just successfully built your own Bluetooth Speaker that will not only connect wirelessly to your mobile phone or suitable music player, but is a totally accurate replica of the Pip-Boy stand as seen in Vault-Tec vaults across the land. Display your Pip-Boy, play your music, answer calls and use as a handsfree speakerphone and enjoy.



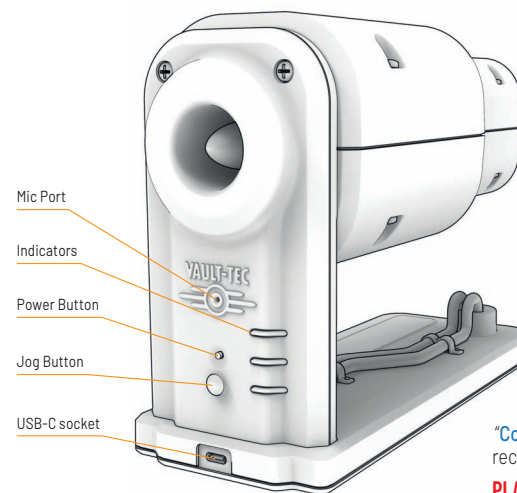
Pip-Boy 2000 Mk VI

Large Cuff

43

Don't relax for too long, because it's time to display your Pip-Boy 2000 Mk VI. Carefully slide the Pip-boy into place fully on to the Display Stand so that the Large Cuff is at the support end and rotate so that the screen is vertical.

OPERATING INSTRUCTIONS



Mic Port

Indicators

Power Button

Jog Button

USB-C socket

- Your music streaming device should report that it is pairing.
- Once the **Stand** is paired it will emit a short high-pitched tone and say, "**Connected**".
- The **Bottom Indicator** will double flash blue while the Stand is connected.

Typically the **Stand's** Bluetooth radio will work with a range of up to five metres. Atmospheric conditions and dense solid objects (such as walls) can reduce this range. If the music streaming device moves out of range of the **Stand**, then the connection will be broken. However, the **Stand** and the music streaming device will not forget their pairing and as soon as they move back within range of each other they will automatically reconnect.

Once the **Stand** is paired with a device, it will remember that device and the device will remember the **Stand**. Each time it is powered on and the other device is within range, it should automatically reconnect to the paired device and say, "**Connected**". If a paired device does not automatically reconnect, single-click the **Stand's** **Jog Button**.

PLAYING MUSIC

To play music, double-click the **Jog Button**. If music doesn't start playing automatically, browse to the music on your music player and select play. Once the music is playing through the **Stand**, double-clicking the **Jog Button** will pause or play the music.

While playing music, the **Jog Button's** functions are altered slightly. Instead of voice clips, jog right and jog left will skip tracks forward and back respectively.

VOLUME CONTROL

Whilst paired, the volume of the **Stand's** speaker may be adjusted by holding the **Jog Button** up or down. A low beep is played for each volume step and a higher beep is heard when the volume is at its maximum or minimum setting.

NOTE: Depending on the paired device, adjusting the music playback volume on the paired device may affect the volume of the music streaming through the Stand.

UNPAIRING

To unpair the **Stand** from a device that it has been paired with, browse to the device's Bluetooth settings menu, select **Pip-Boy Stand** from the paired devices list and select "unpair" or "forget".

Note: The exact sequence for unpairing will vary from device to device, so please consult your device's manual for the correct procedure.

CARE INSTRUCTIONS

The **Stand** is a high tech communications device and should be handled with care. Clean only with a soft, slightly damp cloth and never immerse in water.

To protect the **Stand** while not on display, store it out of direct sunlight. The Stand should only be used when its operating temperature is between 10°C and 40°C (50°F to 100°F).

POWERING UP AND POWERING DOWN

To power up the stand, connect the USB-C lead to a suitable power supply and plug it into either of the two **USB-C Sockets** on the base of the **Stand**. When the **Stand** is powered up and is not connected with another Bluetooth device, the **Top Indicator** flashes green. When the **Stand** is connected with another Bluetooth device, the **Bottom Indicator** double-flashes blue.

Press and hold the **Power Button** to power down or power up the Stand when the USB-C lead is plugged in.

JOG BUTTON FUNCTIONALITY

The **Jog Button** is a five-way jog button and can be either pressed in or jogged up, down, left or right. The **Stand** does not have to be paired with or connected to any devices if you only want to play any of the 10 built-in Overseer voice clips. Press or double press, or jog left, right or up or down or double jog in each direction to play each of the clips.

CONNECTING AND PAIRING THE STAND

In order for the **Stand** to play music, it must be paired with and connected to a Bluetooth-enabled music streaming device. When paired with a mobile phone, the **Stand** can also act as a handsfree speakerphone.

To pair and connect the **Stand**:

- Activate Bluetooth on your music streaming device.
- Press and hold the **Jog Button** until the **Stand** says, "**Waiting for Bluetooth connection**", and the **Bottom** and **Top Indicators** alternately flash green and blue.
- Make sure your music streaming device is searching for devices.
- Within 60 Seconds, your music streaming device should show **Pip-Boy Stand** in its list of available devices.
- Select **Pip-Boy Stand** from the list.