

One game card with every holotape kit.



Collect them all

This **Pip-Boy 2000 Mk VI** is a replica model of the pre-war Personal Information Processor (PIP) manufactured by RobCo Industries as an updated version of the Pip-Boy 2000. Designed to be worn on the forearm, the Pip-Boy 2000 Mk VI is the last word in convenience, enabling vault dwellers to keep track of their personal stats and inventory on the go. The Mk VI model was only made available to residents and staff of Vault 76.

Previously this replica was only available in kit form, but recent developments in manufacturing capability have enabled RobCo Industries and Vault-Tec Corporation to collaborate on the production of this preassembled version. The enjoyment of a piece this accurate is increased by its illuminated display panel, which, fitted as standard, features a Malfunction Function™ with an authentic Tap-to-Fix™ action.

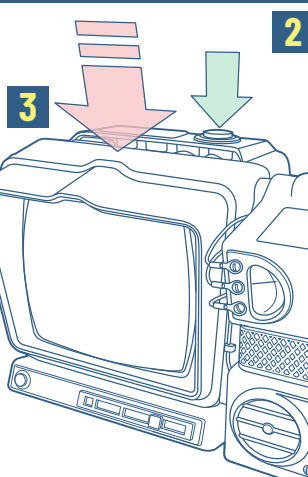
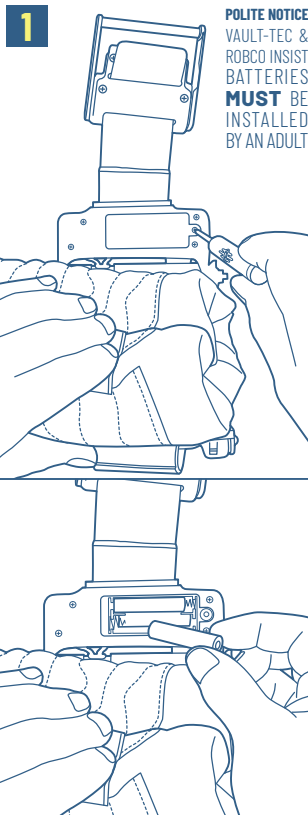
Whether you decide to wear your Pip-Boy or display it, you will be pleased to discover that RobCo also manufactures a functional FM Radio Upgrade Module and a specially developed Bluetooth® Speaker Display Stand replica for the Pip-Boy, both of which are available to purchase separately.

1 INSTALLING THE POWER CELLS

Before powering up your Pip-Boy Display Panel for the first time you will need to install its power cells. The Mass Fusion Power Cells provided with this set should be used initially, but for the purposes of subsequent refueling, these may be replaced by any good quality alkaline AAA sized batteries. The batteries are located inside the Top Control Box and access to the battery compartment is via a door on its underside. To access the battery compartment, unclip the Buckle and carefully push the cuff away from the Top Control Box and, using the Vault-Tec screwdriver supplied, unscrew the battery door locking screw and open the door.

Note that the screwdriver has a reversible blade with a cross-head tip on one end and a slot-head blade on the other. To unscrew the battery door locking screw please select the cross-head tip.

INSTALLING THE POWER CELLS



POWERING UP AND DOWN
MALFUNCTION FUNCTION &
TAP-TO-FIX

Place the power cells (or replacement AAA alkaline batteries) in the battery compartment, ensuring that they are placed over the removal ribbon, taking care to ensure that the battery polarities match the battery box markings. Replace the battery door and tighten the locking screw.

2 POWERING UP AND DOWN

Pressing the Power Button on top of the Top Control Box turns the Illuminated Display Panel on or off with a single press.

3 MALFUNCTION AND FIXING

At any time up to three minutes after the Display Panel has been powered up, it will appear to start malfunctioning, flickering in a random sequence that simulates a loose connection in the internal electronics. Mimicking the time-honored method for fixing such annoying intermittent electronic malfunctions in the field, a sharp tap on the top of the display housing will stop the flickering and "fix" the malfunction. Every so often the Display Panel will malfunction in this way. If you are not able to tap the display housing, the flickering will fix itself after a few seconds and the display's illumination will settle down to a steady glow. Naturally, if you tap the top of the display housing while it is functioning normally, it will flicker a few times as if the internal connection is still not fully secure and tapping the case has dislodged it.

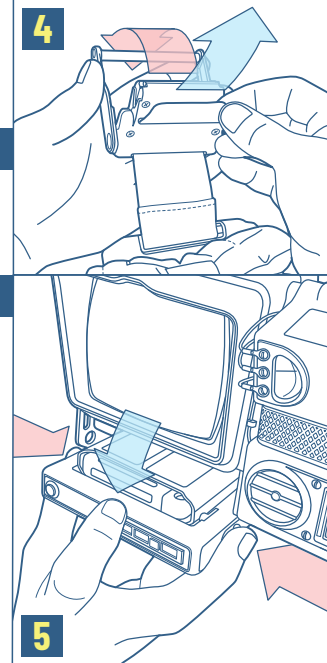
4 ADJUSTING THE STRAP

The strap may be tightened, and thus the cuff made to fit slimmer arms, by lifting the Buckle Toggle Bar and threading more strap through the Buckle and out through the Buckle Slot on the underside of the buckle. When the strap is as tight as required, closing the Buckle Toggle Bar secures the strap in the desired position.

5 EJECTING THE HOLOTAPE

To open the holotape mechanism to eject or insert a holotape in the player, press the buttons either side of the holotape player with your thumb and middle finger and pull

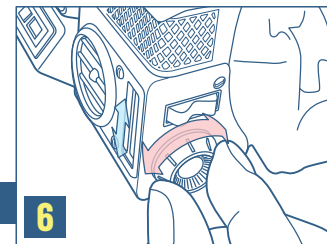
ADJUSTING THE STRAP EJECTING THE HOLOTAPE



the body of the holotape player down with your forefinger. CAUTION: only pull the holotape player body down enough to lift the holotape player mechanism up to reveal the holotape opening (about 30° rotation). Over rotating the holotape player by pulling it too far down will damage the hinge mechanism.

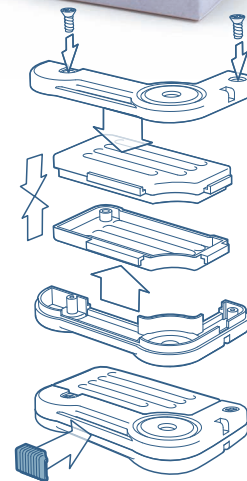
6 ADJUSTING THE DIAL POINTER

Turn the radio tuning knob to move the pointer up and down the dial in the most pleasingly authentic manner.



ADJUSTING THE DIAL POINTER

Holotape kit – the perfect complement to your new Pip-Boy.



It's fun to build!

RobCo

for VAULT-TEC, Vernon Square, Washington, D.C.

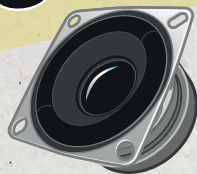
Please correctly insert 3 x AAA (LR03) batteries before first use (supplied). Always use alkaline batteries. To avoid battery leakage, overheating batteries and damaging the Display Panel Module, never mix old and new batteries. ALWAYS follow the instructions carefully. Only use AAA alkaline batteries and be sure to insert them correctly by matching the battery + and - polarity battery symbols with the Display Panel Module battery compartment + and - markings; DO NOT use rechargeable batteries; DO NOT mix old and new batteries; DO NOT short-circuit the supply terminals; DO NOT mix different types of batteries; ALWAYS remove exhausted batteries from the product; ALWAYS remove batteries from the Display Panel Module when not in use for extended periods.

Bluetooth



Pip-Boy Stand

- ▶ **Fully working Bluetooth speaker**
Connect to your music device.
- ▶ **MEMS mic for speakerphone**
Use with smartphone for calls.
- ▶ **10 Authentic Overseer audio clips.**
A Fallout audio clip for every occasion.
- ▶ **Replica Pip-Boy stand**
Identical to in-game Pip-Boy stand.
- ▶ **Fun to build**
Impress your friends & colleagues.



RobCo

bringing a smile to your ears!

BUILD YOUR OWN BLUETOOTH SPEAKER. IT'S AVAILABLE AT RETAILERS WORLDWIDE. **BUY - BUILD - BRAG**



The perfect power source for your favorite Pip-Boy upgrade module!



They fit perfectly and they're fully function friendly.
NOT SOLD SEPARATELY - CURRENTLY ONLY AVAILABLE WITH UPGRADE MODULES.

It's the sound you've been longing to hear

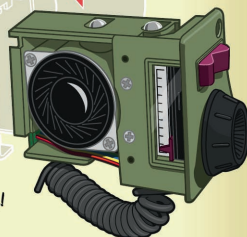
- Fully working FM radio
- Authentic Wasteland broadcasts
- Monophonic reproduction
- Glowing vacuum tubes
- Illuminated tuning dial
- Simple to operate
- Easy to install

A perfect fit for your Pip-Boy



RobCo

bringing a smile to your ears!



ADVERTISEMENT

Special Donut Delivery Flea only \$99.95



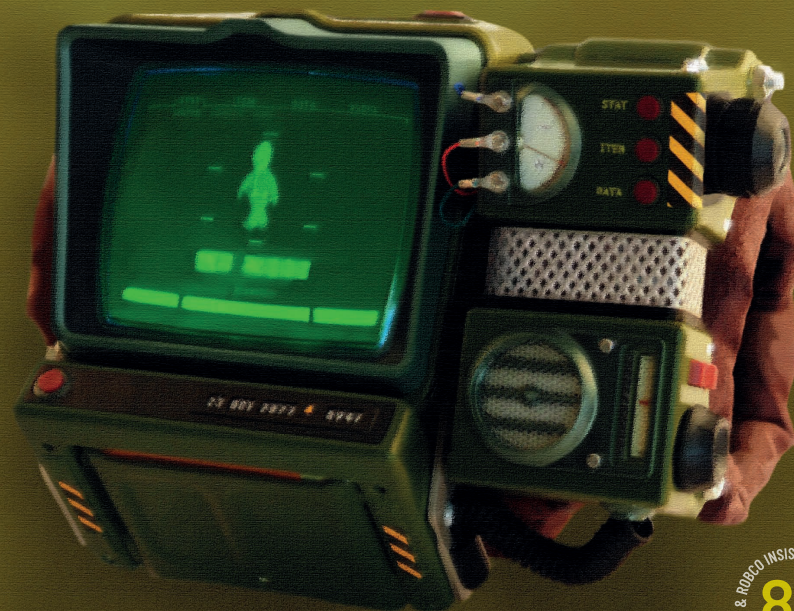
Slocum's Joe

ONLY AVAILABLE WHILE STOCKS LAST

NO COLLECTION IS TRULY COMPLETE WITHOUT THE SLOCUM'S JOE DONUT DELIVERY FLEA

Preassembled

PIP-BOY 2000 Mk VI
PROFESSIONALLY PUT TOGETHER



8+
VALU-T-ECT & ROBEO INSISTS - ONLY SUITABLE FOR

WITH BUILT-IN FULLY ILLUMINATED SCREEN PANEL

Fully illustrated

OPERATING MANUAL

An introduction to the use of one of the most authentic simulations of the Vault-Tec's iconic forearm computing device - it's the most practical way to dress your arm in the Wasteland!